



Contact:

## Artist Grade Concrete Acid Stain Color Chart

**Final color is determined by Your particular piece of concrete.**

As each piece of concrete is **different and unique**, each piece of concrete will **color differently**, allowing **variance and beauty** to unfold, giving each piece of concrete it's own **unique interpretation** of the color's used.

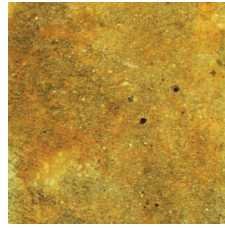
*Camouflage Your Concrete!*



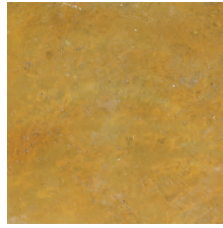
**Faded Linen**  
usually has more **Creams, Soft Yellows,** or **Soft Buffs,** can have areas of **Off Whites** and **Linen Creams.**  
color: *pastel to light*



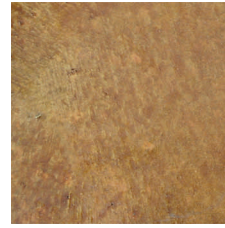
**Buckskin**  
is usually more of a **Tan,** and/or **Bufs,** and/or a **Light Browns** mix.  
color: *light to medium*



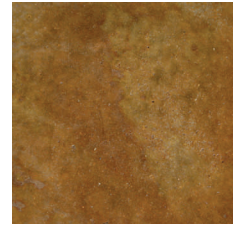
**Sandstone**  
usually has more **Golds** or **Yellows** than **Bufs** and sometimes some **Burnt Ambers.**  
color: *light to medium*



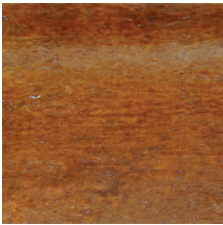
**Golden Sand**  
is usually more of a **Caramel** or **Cola.** Can be an **Amberish Gold,** with more **Golds** in it's unique combination.  
color: *light to medium*



**Island Sand**  
is usually a **Sandy, Buffy,** or **Rusty Tan.**  
color: *light to medium*



**Honey Oak**  
is usually a warm mix of a **Golden** undertone with a **Brown** overtone, sometimes with **Ambers** coursing through.  
color: *light to medium*



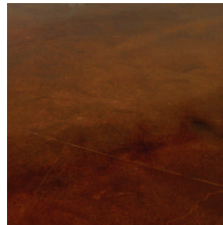
**Canyon**  
is usually more of a **Reddish** or **Brownish Amber** with a **Golden** undertone.  
color: *medium to dark*



**Terra Buff**  
is usually more of an **Amber** or **Earthtone Terracotta,** than a **Red Terracotta,** though it can have a warm mix.  
color: *medium*



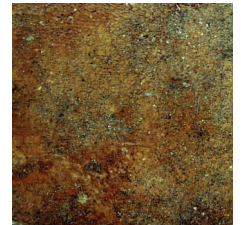
**Rosewood**  
is usually a **Reddish** with a **Golden** undertone.  
color: *medium to dark*



**Saddle**  
is usually a **Reddish, Burgundyish,** or a **Mahogany,** much like a **Red Leather Saddle.**  
color: *medium to dark*



**Mocha**  
is usually more of a **Beige** and/or a **Medium Brown** mix.  
color: *light to medium*



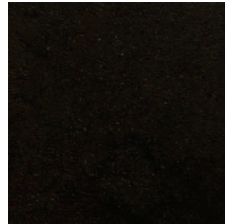
**Western Brown**  
usually has more of a **Medium Brown** mix with a **Worn Tan** or **Gold-ish** undertone.  
color: *medium to dark*



**Leather Brown**  
is usually a medium to dark **Leathery Brown** mix.  
color: *medium to dark*



**Coffee**  
is usually more of a **Dark Walnut** with **Blacks** and **Dark Browns.**  
color: *dark*



**Brownstone**  
is usually more of a **Brownish Black.**  
color: *dark*



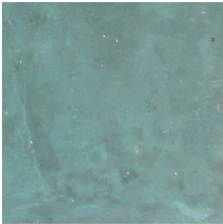
**Riverstone**  
can be **Greys** or **Browns,** though it is usually a mix of light and dark.  
color: *light to dark*



**Weathered Wood**  
can also have more **Greys** or it can have more **Browns,** depending on the concrete. It can go darker or lighter.  
color: *light to dark*



**Onyx**  
is about as **Black,** as it gets.  
color: *dark*



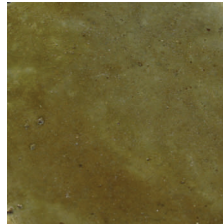
**Turquoise**  
is, well, a **Blue Turquoise.**  
color: *light to medium*



**Sea Mist**  
is usually a soft mix of **Light Blues** and **Light Greens.**  
color: *pastel to light*



**Mossy Green**  
is usually a **Light Pastel Green** with hints of **Browns.**  
color: *pastel to light*



**Slate**  
is usually a **Darker Green** undertone with either a **Dark Grey** or **Brown** overtone.  
color: *medium to dark*



**Bronze Green**  
can be a **Green,** a **Light Bronze,** a **Dark Bronze,** or a combination.  
color: *light to medium*

Reacting with the minerals already present in your concrete, which were randomly dispersed when the concrete was poured, acid stain beautifully achieves natural color variances, highs and lows, darks and lights, marbling and mottling, with small imperfections and hairline cracks adding unique character effect.